



ROCKFORD ELEMENTARY SCHOOL PROTOTYPE
The Rockford Public School District's mission was to collaboratively engage all students in world class education and create an inspirational place that maximizes student...

>> 014page



RESTAURANT WEESHUYS
The main goal in restyling Restaurant Weeshuys was increasing connectedness. By changing the routing and incorporating the kitchen and taproom into the restaurant and they achieved a more lively atmosphere in which...

>> 056page



CHICKITA GEMA
GEMA, an architecture and interior design company devised for CHICKITA, a flame grilled chicken restaurant, a vibrant and playful facade coherent with the festive theme of the interior, thus establishing a lasting brand...

>> 080page



BOB SPECIAL BLACKBIRD VENTURES CANNONDESIGN | LOD | LA LIVING & OPR DESIGN | CLAESSON KOIVISTO RUNE ARCHITECTS | BOB Coordination FORMAE

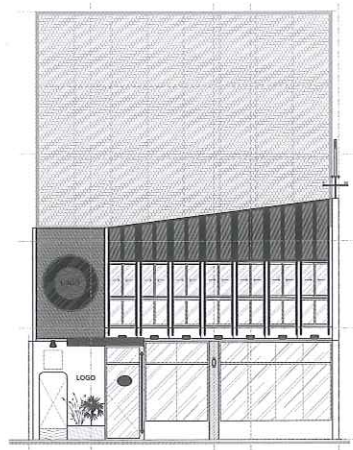
Blackbird Ventures is a venture capital company that has backed many start-ups from their infancy to becoming huge success stories. This community of start-ups and their founders is at the heart of Blackbird and these stories needed to be celebrated in the new Blackbird

new space. The Blackbird Ventures brand, fun branding was developed previously by super talented graphic design company We Buy Your Kids (WBYYK) and The Bold Collective were thrilled to work collaboratively with them on this project particularly with such a bold colour palette and patterned aesthetic. Aspects of hospitality and retail design

were included in the project brief. The client requested an area to host new prospective entrepreneurs as they waited (most likely nervously) to pitch their ideas. The Bold Collective designed a highly colourful and patterned bar area at the heart of the space which is surrounded by a retail display that exhibit products, branded apparel and...



90



ELEVATION



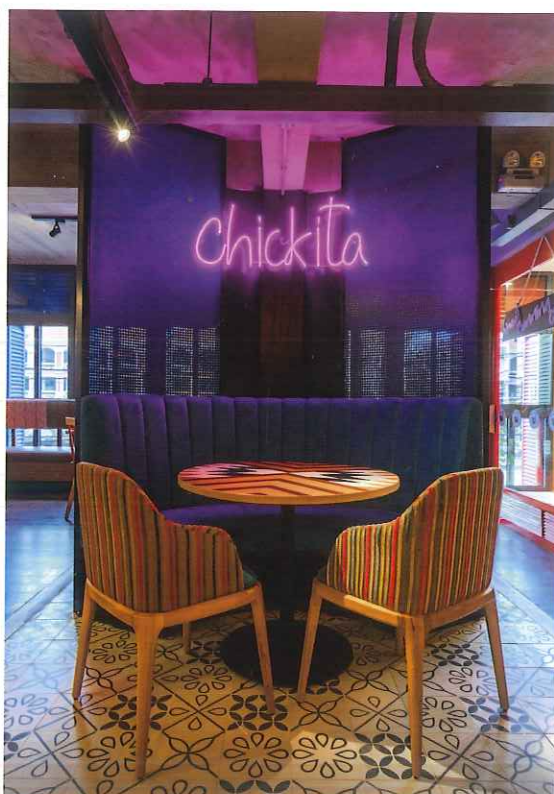
ENVIRONMENTAL GRAPHICS

CHICKITA

Design : Gema **Design team :** Mauricio Alves, Katia Bonanno, Nguyen Hong Hanh, Rebeca Quarterolli, Chu Dong Anh **Location :** Ho Chi Minh, Vietnam **Built area :** 350m² **Completion :** 2019 **Client :** AHM lifestyles **Photographer :** Chu Dong Anh (from Gema) **Editorial designer :** Minki Shin **Editor :** Jill Park



GEMA, an architecture and interior design company devised for CHICKITA, a flame grilled chicken restaurant, a vibrant and playful facade coherent with the festive theme of the interior, thus establishing a lasting brand identity. Fusing traditional charm and current details, GEMA achieved a cozy and appealing space in a vibrant multicoloured setting with bespoke furniture. The material palette uses wood with lively coloured accents, such as strings and lighting fixtures to create an original atmosphere, inviting the customer to relax, linger, and order dessert! The lighting is judiciously coordinated to create at the same time a general cordial atmosphere and a more direct illumination of each table. Focal points are highlighted with neon tubes and the structure of the building is emphasized with strands of colourful string creatively and flexibly covering bright columns, accentuating their verticality. The ceiling is left unobstructed, adorned simply with a metal mesh, freeing a more spacious enclosure in its sincerity, another wink to modernity. A delicate balance between convivial, unaffected and contemporary is achieved. The seating space is optimized thanks to a continuous bench on the side wall, animated with a mismatched pattern in the upholstery. On the wall behind is displayed in large script 'The Story of CHICKITA', providing factual information and a strong narrative of the origins and purpose of the establishment. Other artwork pieces, judiciously disposed to enliven more than to take center stage, follow the same polychrome approach selected for the restaurant. GEMA's outstanding experience in bar and restaurant design integrates from the very first concept to a careful planning of the space, streamlining operations. The layout revolves around functionality, optimizing circulation spaces, delineating seating areas and facilitating efficient and attentive service and customer satisfaction. A thoughtful distinct access for suppliers connects directly to the kitchen, leaving the reception area uncluttered. Distinct floor tiling provides a balance between connectivity and privacy and, on the ground floor, the bar corner, with its painted roof tiles creating a 'feather wall', serves as the focal point. The staircase, granting glimpses in the kitchen, opens on a spacious and colourful second-floor dining room. Text offer : Gema





제마는 닭구이 전문 식당 치키타를 위해 역동적이고 자유로운 입면 디자인을 완성했고, 이는 축제를 주제로 하는 인테리어 디자인과 궤를 같이 하며 인상적인 브랜드 아이덴티티를 구축한다. 디자이너는 전통미와 현대적 디테일을 결합해 활력 넘치고 배색이 다채로운 분위기와 맞춤형 가구가 있는 아늑하고 매력적인 공간을 완성했다. 소재 구성은 나무와 함께 끈이나 조명 같은 발랄한 색상의 강조 요소를 사용해 고유한 분위기를 연출함으로써 손님들이 여유를 즐기며 오래 머물도록 하고 또 디저트를 주문하도록 유도한다! 조명은 전체적으로 화기에 애한 분위기를 조성하는 동시에 각 테이블에 직접 조명을 더 많이 비추도록 세심하게 구성했다. 시선이 집중되는 곳은 네온 튜브로, 건물 구조는 밝은 느낌의 기둥을 창의적이고 유연하게 뒤덮으며 기둥의 수직성을 돋보이게 하는 다채로운 색상의 끈다발로 강조했다. 천장은 흰색 드러낸 뒤 금속 메시로만 장식함으로써 공간을 더 넓어 보이게 했는데, 이는 모더니티를 완성하는 또 다른 요소다. 결과적으로 유쾌함, 자연스러움, 현대성의 미묘한 균형을 보여준다. 작석 공간은 축벽에

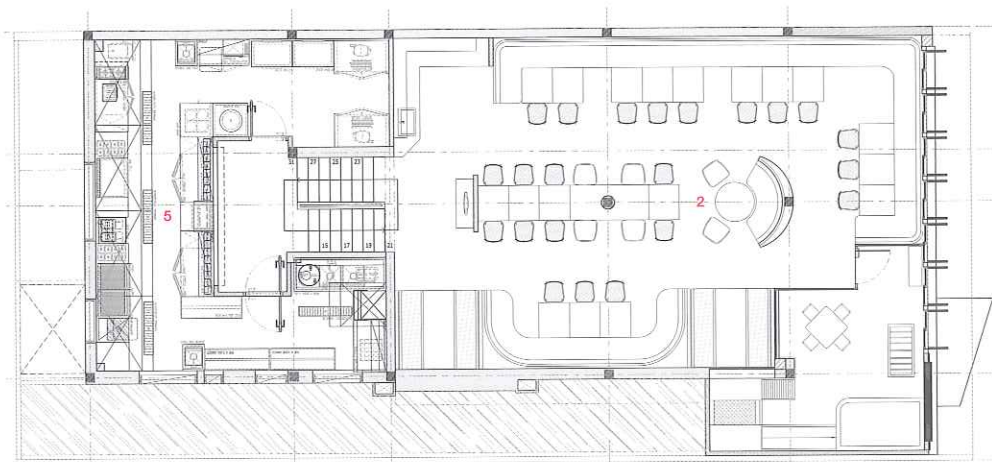
긴 의자를 설치해 최적화했고, 불협화음을 일으키는 의자 덮개 패턴이 생기를 더해준다. 뒤편 벽에는 'The Story of CHICKITA'라는 커다란 문구가 적혀있는데, 치키타의 시작과 목적에 관한 사실과 인상적인 이야기를 전해준다. 다른 예술작품들은 사람들의 시선을 끌거나 이곳에 적용된 다색적 접근을 따르는 것 이상으로 공간에 활기를 더해줄 수 있도록 섬세하게 배치했다. 디자이너는 풍부한 바와 레스토랑 디자인 경험을 바탕으로 최초 콘셉트 설정에서 세부 공간 계획에 이르는 과정을 통합함으로써 작업을 간소화했다. 공간 구성은 기능성에 초점을 맞춰 동선 최적화, 작석 공간 확보, 효율적이고 세심한 서비스 및 고객 만족을 실현해준다. 사려 깊게 설계한 공급업체 전용 접근로는 주방과 바로 연결해 리셉션 영역이 복잡해지지 않도록 했다. 선명한 바닥 타일 디자인은 연계성과 독립성 사이의 균형을 이루어주고, 1층 바 코너에서는 도장 마감 기와와 함께 '깃털 벽'을 구성하며 공간의 구심점이 된다. 주방에서도 볼 수 있는 계단은 넓찍하고 색상이 다채로운 2층 식당으로 이어진다. 글 제공 : 제마



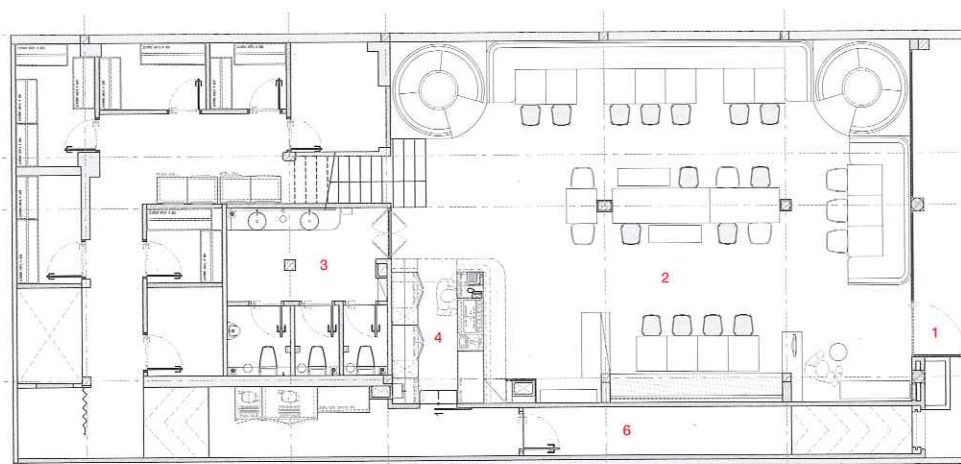
1 ENTRANCE
2 RECEPTION

3 WC
4 BAR

5 KITCHEN
6 SUPPLIER CONNECTS



1ST FLOOR PLAN



GROUND FLOOR PLAN

